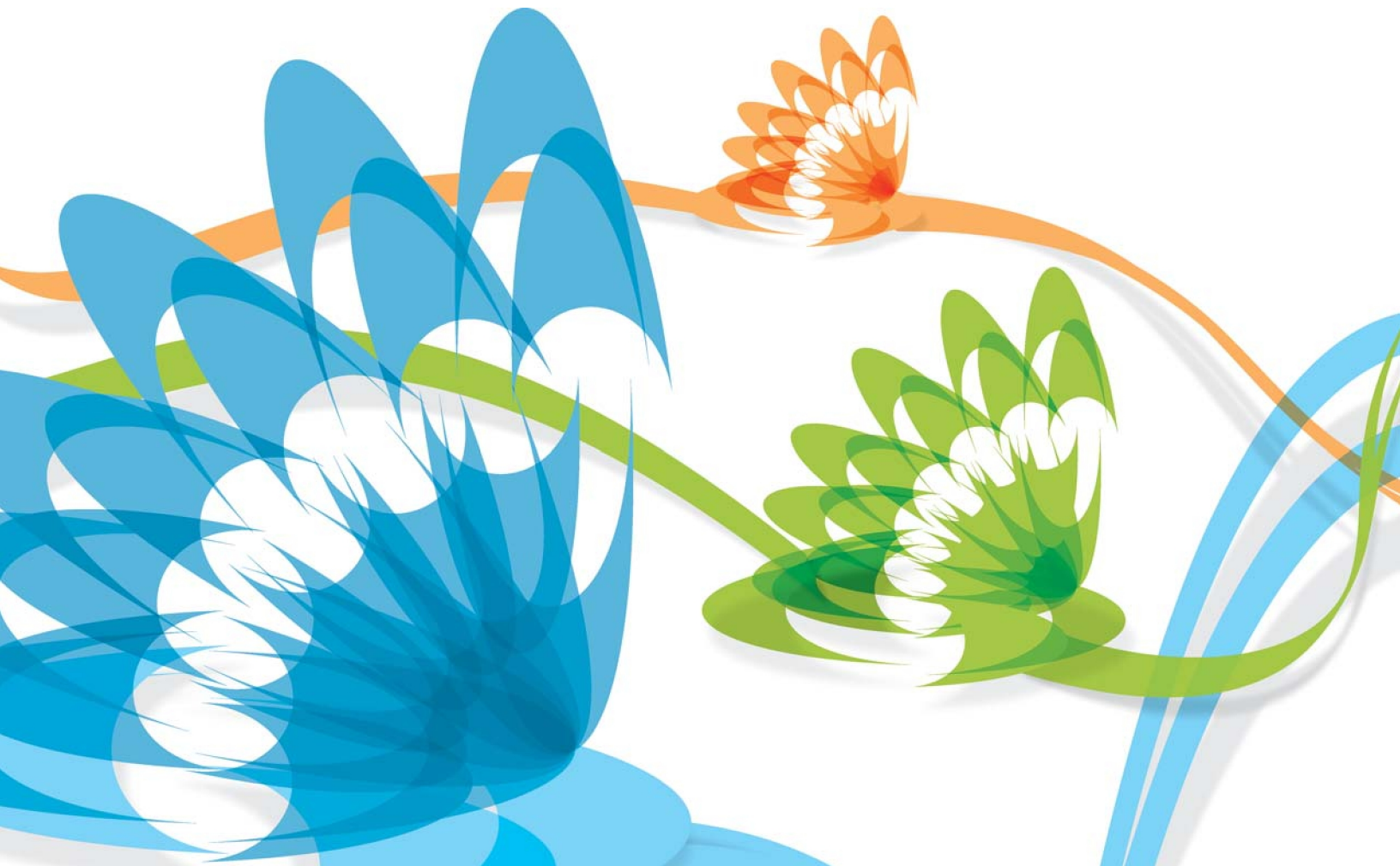


PRINTSHOP MAIL SUITE



PrintShop Mail Release Notes



Copyright Information

Copyright © 1994-2010 Objectif Lune Inc. All Rights Reserved.

No part of this publication may be reproduced, transmitted, transcribed, stored in a retrieval system, or translated into any other language or computer language in whole or in part, in any form or by any means, whether it be electronic, mechanical, magnetic, optical, manual or otherwise, without prior written consent of Objectif Lune Inc.

Objectif Lune Inc. disclaims all warranties as to this software, whether expressed or implied, including without limitation any implied warranties of merchantability, fitness for a particular purpose, functionality, data integrity or protection.

PlanetPress and PrintShop Mail are registered trademarks of Objectif Lune Inc.

PostScript and Acrobat are registered trademarks of Adobe Systems Inc.

Pentium is a registered trademark of Intel Corporation.

Windows is a registered trademark of Microsoft Corporation.

Adobe, Adobe PDF Library, Adobe Acrobat, Adobe Distiller, Adobe Reader, Adobe Illustrator, Adobe Photoshop, Optimized Postscript Stream, the Adobe logo, the Adobe PDF logo are either registered trademarks or trademarks of Adobe Systems Incorporated in the United States and/or other countries.

Trademarks of other companies mentioned in this documentation appear for identification purposes only and are the property of their respective companies.

Title	PrintShop Mail - Release Notes
Revision	2010/06/24

1 What's New in PrintShop Mail 7	1
2 Barcode plug-in	3
3 DirectSmile plug-in.....	6
4 System Requirements	7
5 Version notes.....	8
5.1 Known issues.....	9
5.2 Recommendations	11
5.3 Resolved issues	12



1 What's New in PrintShop Mail 7

General

- The new Save for Output function creates a portable archive file containing the .psmd document and all of its support files, including fonts.
- Automatic conversion of Word 2007 documents (.docx; .docm) to PDF.
- Holding down Ctrl+Shift while PrintShop Mail is starting up will allow you to reset application preferences, toolbar configuration, and window positions.
- Added new zoom toolbar buttons. Zoom modes like "Whole Layout", "Layout Width" and "Whole Page" are maintained while you resize the main window. The maximum zoom level has been increased to 800%.
- The new Hand Mode tool allows you to pan around the document (shortcut: hold Space).
- You can now edit object variables by right-clicking an object and selecting the appropriate menu item. Variables linked to Barcode and DirectSmile plug-in objects are listed in the Variables tab.

Printing

- Added support for non-PostScript printers, including PCL printers, Faxes, and the Microsoft Office Document Image Writer.
- The new Adobe PDF technology will output the entire job to PDF (shortcut: Save as PDF in the File menu).
- You can now split jobs on either records or pages. When using repetition, splitting on records ensures that each subjob will consist of a sequential range of records.
- Layout copies can now be collated (1, 2, 1, 2) or uncollated (1, 1, 2, 2).
- The new Print Variable Markers function allows you to print your design, showing variable placeholders instead of the actual data.
- You can change the print technology in the Print dialog, without having to open the Preferences dialog.
- If an image resource stored on a remote server becomes unavailable during a print run, PrintShop Mail will put the job on hold and allow you to Abort, Retry, or Ignore all subsequent errors for the same image.

Automated Printing

- The new FilePrintToFile script command allows you to print to file.
- When using the DatabaseOpen script command, the first table in the database will initially be selected. You can now use the new DatabaseSelectTable script command to select a different table.

Expressions

- The CHANGED function can be used to determine whether the result of an expression has changed since the previous record.

Database

- Improved performance; most noticeable when browsing through the records of a large database.
- Support for Excel 2007 (.xlsx, .xlsb, .xlsm) and Access 2007 (.accdb), without having to use ODBC.
- Support for Visual FoxPro containers (.dbc) and tables (.dbf), without having to use ODBC.
- Support for password-protected and possibly encoded or encrypted Access databases.
- Improved support for XML databases: more helpful error handling, limited support for hierarchical recordsets.
- You are now prompted for a separator and encoding when opening a .txt or .csv file, there is no need to manually configure Schema.ini.
- Database filter: added support for "starts with", "ends with", and "contains", including their negative forms ("does not ...").
- You can now search the database using the shortcut Ctrl+F.

- Improved table selection dialog, showing a preview, description (when available), and record count for each table.
- The main table can now be a view or non-parameterized stored procedure.
- The behavior of the table selection dialog has been improved when accessing an SQL Server database. System tables are properly filtered.

Text

- Improved performance in general, most noticeable when verifying or printing, and especially when using Remove Empty Lines.
- More efficient memory usage, no limits on the number of text objects per document.
- Line height should now be WYSIWYG. When aligning a signature image object to a specific line in a text object, you can now rely on the fact that it will still look the same in the print output. [Known issue: this will only work properly when not using Vertical Layout]
- Improved behavior of the Right-to-Left reading order button. It should now work on any system; no prerequisites.
- Copy Fitting optionally keeps lines together instead of performing word wrap.
- TEXT_FILE: Variable markers in external text files are now also processed, as long as the variables are defined elsewhere.
- The new Fonts pane will help determine whether the fonts used in text objects are available on your system, and whether the fonts used in EPS images are either embedded or installed on the printer.
- Snap Frame to Content now also works in combination with Copy Fitting. It will also work for the last text object in a linked chain of objects.
- You can now increase, decrease and reset spacing between characters through shortcut keys Ctrl+Shift+[, Ctrl+Shift+], and Ctrl+Space.
- Text objects are no longer limited to a single non-RGB text color.

Images

- Improved performance when verifying
- Added support for resolution-independent Windows MetaFile images (.wmf).
- In the design view, PrintShop Mail now displays a high-quality rendering of EPS images instead of showing a low-resolution TIFF preview.
- You are now able to select and print different frames in multi-frame TIFF and GIF images.
- PrintShop Mail now imports spot colors embedded in PDF files.
- After importing a Word document in PrintShop Mail, the layout object will automatically be updated if the original Word document is modified.



2 Barcode plug-in

Requirements

- This version of the Barcode plug-in is compatible with PrintShop Mail version 6.1 for Windows, but version 7 is recommended. It is not supported by older versions of PrintShop Mail.
- The plug-in requires a hardware dongle with an OL Care date of at least June 2009; otherwise the print output will include a watermark.

What's new in 2.0.5

[Released: March 2010]

- USPS Postnet: Bar height is now fixed at 0.125 inch.
- USPS Postnet: Recommended module width is now fixed at 0.508 mm (0.020 inch).
- USPS Postnet: Space between bars is now 1.25 times larger than the bar width.
- USPS Postnet: The Data and Encoding properties have been replaced by properties called ZIP and Address. When ZIP represents a ZIP+4 code consisting of 9 digits, the Address property can be used to form a delivery point barcode. This works similar to the POSTNET function in PSM.
- Default font size for human readable text is now set to 8pt instead of 12pt.

What's new in 2.0.3

[Released: January 2010]

- USPS Postnet 5, 6, 9, 10, 11 and 12 variants have been replaced by one barcode type called USPS Postnet. The plug-in will use the appropriate Postnet variant based on the input data length.
- Any hyphens will automatically be stripped from the USPS Postnet input data.
- The recommended module width of USPS Postnet has been set to the range between 0.381 and 0.635 mm.
- Japanese Postal now accepts Japanese addresses as input data. The plug-in will extract the relevant information.
- The plug-in now exposes a property called Font Size that controls the size of the human readable text.
- Korean translation.
- [PrintShop Mail 7 only] The expression of a barcode plug-in object can now be viewed and edited through the Variables pane.
- [PrintShop Mail 7 only] Double-clicking a barcode plug-in object will now edit the associated expression.
- [PrintShop Mail 7 only] Snap Frame to Content is supported and set to Yes by default.

What's new in 2.0.2

[Released: June 2009]

Added a number of new barcode types:

Linear Barcodes (1D)

Codabar
Code 11
Code 2 of 5, Code 25
Code 3 of 9, Code 39
Code 93
Code 128
EAN 8 (JAN, IAN)
EAN 13
EAN 14
EAN 128
Flattermarken
GS1-128, UCC/EAN-128, UCC-128
GS1 DataBar, RSS
ISBN
LOGMARS
MSI
NVE 18
Pharmacode
PLANET
Plessey
PZN
SSCC-18
Telepen
UPC-A, UPC 12
UPC-E
UPC Shipping Container Code, EAN/UCC-14, SCC-14, ITF-14

Postal Barcodes (1D)

Australian Post
German Parcel Service Label Code
Deutsche Post Identcode
Deutsche Post Leitcode
Japanese Postal
Italian Postal
KIX (Dutch)
Korean Postal Authority
RoyalMail 4State (RM4SCC)
USPS Intelligent Mail Barcode, OneCode, 4-State Customer Barcode
USPS Postnet

Two Dimensional Barcodes (2D)

Aztec Code
Codablock-F, Stacked Code 128
Data Matrix
GS1 DataBar Stacked, RSS-14 Stacked
MaxiCode
MicroPDF417
PDF417
QR-Code

Reporting issues

Your reports of any unexpected behavior are highly appreciated; please refer the online Help (press F1 in PrintShop Mail) for contact info.



3 DirectSmile plug-in

Requirements

- This version of the DirectSmile plug-in is compatible with PrintShop Mail version 6.1 for Windows, but version 7 is recommended. It is not supported by older versions of PrintShop Mail.
- The plug-in requires a hardware dongle with an OL Care date of at least May 2008; otherwise the print output will include a watermark.

What's new in 2.0.4

[Released: January 2010]

- You can now select multiple DirectSmile objects and change all host addresses, ports, and image sets simultaneously.
- Added support for background images saved in the TIFF image format.
- Korean translation.
- [PrintShop Mail 7 only] The text layer expressions of all DirectSmile plug-in objects can now be viewed and edited through the Variables pane.

Recommendations

- This version of the DirectSmile plug-in is compatible with PSM version 6.1, but version 7.0 is recommended. It is not supported by older versions of PSM.
- The plug-in has been tested with DirectSmile Generator 3.50 revision 129.
- Enabling 'split job' in the print dialog can significantly improve print performance.
- When using a PostScript driver and any print technology other than Creo VPS, you will get the best possible performance by configuring the driver for 'Optimize for Speed' instead of 'Portability'.

Known issues

- [PrintShop Mail 6.1 only] Rotated DirectSmile objects will get an incorrect offset when using the print technology Creo VPS.
- [PrintShop Mail 7 only] DirectSmile requires a PostScript driver; other driver types are not supported.
- Background image resolution (DPI) must be specified as an integer; a floating point value can cause small gaps to appear between the background layer and the foreground image slices.
- Network traffic between PrintShop Mail and the DirectSmile server will affect print spooling performance. Depending on the complexity of your document and on your system- and network configuration, spooling speed should on average be around 60-75 pages per minute.
- If no DirectSmile dongle is attached to the DirectSmile server, on the printout the DirectSmile watermark will be drawn on top of the personalized text, but not on the background. This is not WYSIWYG; the previews in PrintShop Mail do show the DirectSmile watermark on the background.

Reporting issues

Your reports of any unexpected behavior are highly appreciated; please refer the online Help (press F1 in PrintShop Mail) for contact info.



4 System Requirements

PrintShop Mail Windows®:

- Pentium 4, 1GHz or higher
- 1GB of RAM
- 120 MB of hard disk space
- SVGA monitor resolution 800 x 600 High Color (16-bit)
- CD-ROM drive
- Supported Operating Systems
 - Microsoft Windows 2000 (32-bit)
 - Microsoft Windows XP Professional (32-bit and 64 bit)
 - Microsoft Windows Vista (32-bit and 64 bit)
 - Microsoft Windows 2003 Server (32-bit and 64 bit)
 - Microsoft Windows 2008 Server (32-bit and 64 bit) (also R2)
 - Microsoft Windows 7 (32-bit and 64 bit)

PrintShop Mail for Windows requires the following system components to be installed on your computer prior to installing the product:

- Microsoft .Net Framework
 - Version 2.0 SP1 (on Windows 2000, XP and 2003 Server)
 - Version 3.5 SP1 (on Windows Vista and 2008 Server)
- MSXML 4.0 SP2 Parser and SDK
- VCRedist (Visual C++ 2008 vanilla)
- Access Database Engine

The PrintShop Mail Suite setup will automatically check these requirements, missing third party software packages will be downloaded from the internet and installed (but of course, not without your permission). The mentioned components can also be downloaded and installed manually. Installers for these packages can be downloaded from the [Microsoft](#) web site.

PrintShop Mail Macintosh®:

- Power PC® G4, 1GHz
- MacOSX 10.4.11 or higher
- 1GB of RAM
- 50 MB of available hard-disk space
- 1,024 x 768 screen resolution
- CD-ROM drive



5 Version notes

The following sections describe the problems resolved in PrintShop Mail as well as important recommendations.

5.1 Known issues

The following are known issues:

- **"Compatibility issues found" message**

Symptoms:

When publish to web or print to web functions are used a compatibility warning is shown even though the PSM version to create the document and the PSW version matches.

Workaround:

Stop and restart the PrintShop Server service

- **Alternate color representation of a spot color is slightly different**

Symptoms:

SpotColor alternate-color might deviate slightly from the same (non-spot) color specified to a document element (fill color, border).

Workaround:

If the exact alternate color is required, use that directly instead of using a spot-color.

Note: Print output for printers that have the spotcolor available is correct, no action needed.

- **Spot color alternate color in output stream is LAB**

Symptoms:

The colormodel for the alternate color for a spotcolor is in LAB colormodel in the output.

Workaround:

If the alternate color is required to be in a specific model (CMYK;RGB or Gray) then use that color directly.

Note: Print output for printers that have the spotcolor available is correct, no action needed.

- **Not all printers installed on the PrintShop Web server are shown**

Symptoms:

When printing to PrintShop Web the list of printers may not be up to date after installing a new printer on the PrintShop Web Server

Workaround:

Restart the PrintShop Server service after installing a new printer on the PrintShop Web server.

- **Page numbers per page is not supported when using repetition.**

Limitation:

It is only possible to place an object on a layout and not on the whole page.

Workaround:

-

- **On Windows 2000 the 'Vertical-Layout' feature is not supported**

Symptoms:

When opening documents, on this platform, containing objects with Vertical Layout set to 'Yes', this setting will be changed to 'No' without warning.

Workaround:

Use PrintShop mail on a machine with a different Operating System installed.

- **The first line of a linked text object is incorrectly indented**

Symptoms:

In linked text objects, if a paragraph spans multiple text boxes, its First Line Indent setting will be applied to the first line of each of those objects.

Workaround:

-

- **Can't use Excel 2007 (.xlsx, .xlsb, .xlsm) or Access 2007 (.accdb) databases on Windows 2000**

Limitation:

Office 2007 is not supported on Windows 2000.

Workaround:

Convert the databases on a machine with Office 2007 installed to Excel 2003 format or run PrintShop Mail on a machine with another Operating System installed.

- **DirectSmile images are being output with a watermark**

Symptoms:

The printed output shows low resolution DirectSmile images with a "Preview" watermark.

Workaround:

The DirectSmile plug-in requires a PostScript printer. Either print using a PostScript printer or save the output as a PDF and print the PDF via Acrobat Reader.

- **Advanced printer settings may be lost when porting a document to an older OS**

Symptoms:

When opening a document on an older OS, advanced printer settings (like custom page sizes) may be lost. In particular, this will happen when the document was saved on Windows XP SP3, Windows 2008 Server, Windows Vista, or Windows 7, and then ported to an older platform like Windows XP SP2, Windows 2003 Server, or Windows 2000.

Workaround:

If this happens, the advanced printer settings will need to be restored manually. Note that PrintShop Mail will display a warning if it detects that the printer driver has changed since the document was last saved. This indicates that some settings may be lost.

5.2 Recommendations

- Multi-user version: for PrintShop Mail 6.x-net, License Manager 2.0.7 (or later) is required. This version of PrintShop Mail License Manager can be freely downloaded from our website (download page). Please consult the on-line Help of PrintShop Mail License Manager for more info about it
- Opening documents made in PrintShop Mail 4: as 'Regional Settings' can be set per variable object in PrintShop Mail 5 and higher, it is advised to verify and adjust f.i. the DATE format settings for the variable objects in that document.
- #13862 Batch files (.bat) for Automated Printing must be saved in ANSI encoding#11761 (also on double-byte systems).

5.3 Resolved issues

PSM Suite 7.0.4

- In some cases, PDF text would get flattened (i.e. turned into a bitmap) in the print output. Workarounds included downgrading the PDF to 1.3 and saving the PDF as an EPS. This problem should be fixed now.

PSM Suite 7.0.3

- A custom page size will no longer revert to the default size after you reload a saved document.
- The font of variable text could reset to a different font if the original font was a symbol font. For example: Wingdings.
- Several database related errors should no longer occur. Most notably: "Record is too large" when opening a database, and "Either BOF or EOF is True" while browsing through records.

PSM Suite 7.0.2

- Fixed the viewing orientation for PDF output of landscape documents.
- Spaces in PDF text were sometimes replaced by squares (notdef glyphs). This problem has been fixed.
- PSM now uses font substitution if a font is not available when rendering a PDF or when converting a PDF to EPS.
- Improved the mechanism that finds matching paper sizes when loading documents.
- Pasting an object that references an undefined spot color will no longer produce an error.
- Verify and Print will no longer produce unoptimized output.
- FreeForm and FreeForm 2: sending only the master data did not produce any output. This problem has been fixed.
- Whitespace in a variable with only one line will no longer have whitespace removed when 'Remove empty lines' is used.

PSM Suite 7.0.1

- It should now be possible to install PSM Suite on any non-English OS.
- Installer: plug-ins are now always installed, they are no longer optional.
- Copy-pasting objects would sometimes cause data fields to remain visible in the Data Fields pane even when they are no longer in use. This bug has been fixed.
- Opening a database through ODBC should no longer produce an error.
- After opening a document by double-clicking a psmd file, lines in text objects would sometimes appear to wrap incorrectly. This update problem has been fixed.
- If a column in a CSV or Excel database contains mixed types, its field type in PSM will now correctly be set to Text.
- Selecting or right-clicking an object would sometimes add that object to the current range of selected objects. This bug has been fixed.
- The Save as PDF menu item is now disabled if no document is open.
- Formatting of variables: the Email category is no longer reset to Text after saving and loading a document.
- The Credits dialog now correctly displays the installed features on network dongles.
- After placing certain EPS images on a layout, their orientation in the design view would be incorrect. This bug has been fixed.
- The Update Request menu item now redirects to the Voucher page when an empty dongle is attached.
- Improved error handling when PSM cannot establish a connection to PSM Web. After testing the connection you should now get error details.
- PSM is now more robust when it comes to misbehaving macros.