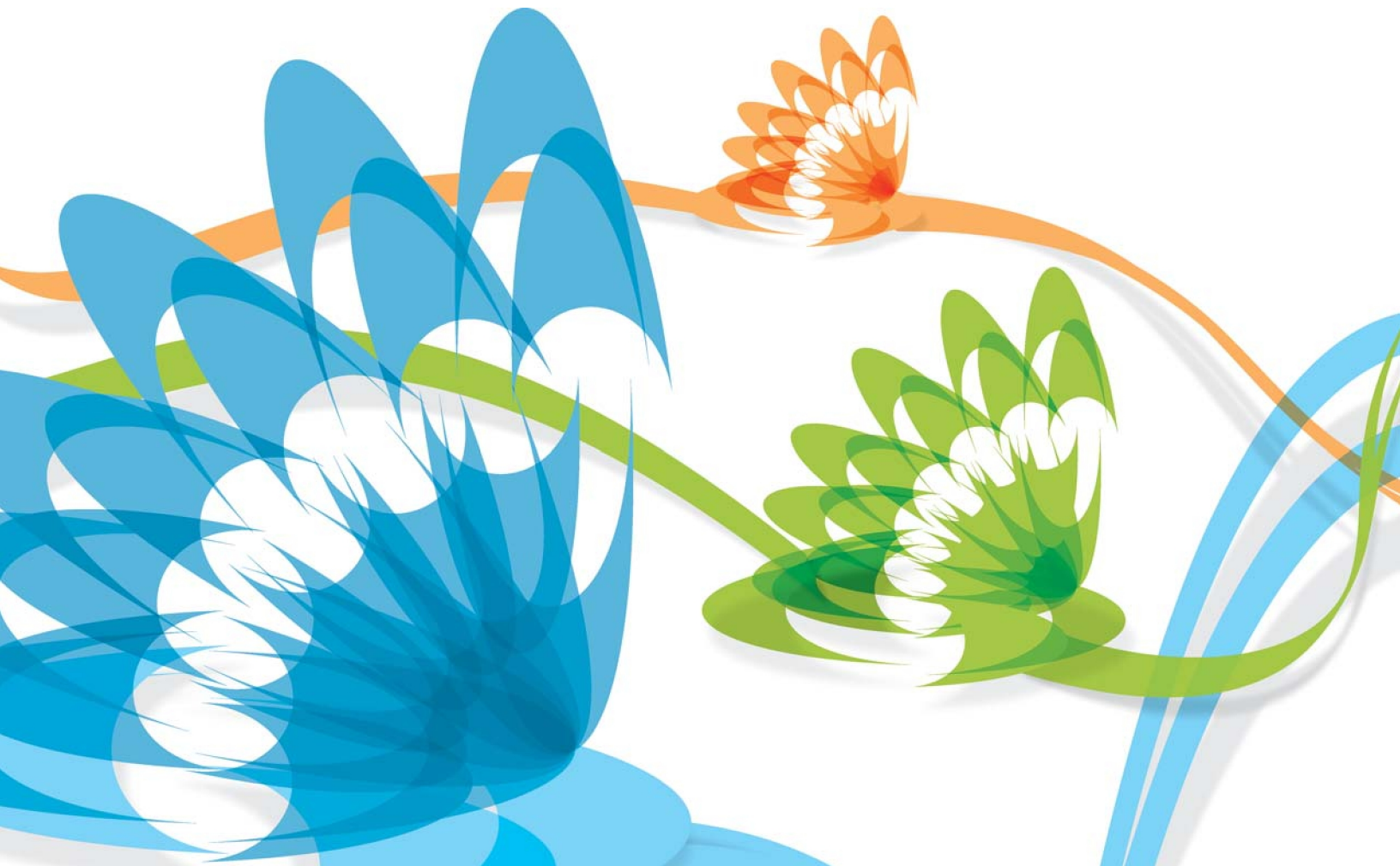


# PRINTSHOP MAIL SUITE



## PrintShop Mail Web Release Notes



## Copyright Information

Copyright © 1994-2010 Objectif Lune Inc. All Rights Reserved.

No part of this publication may be reproduced, transmitted, transcribed, stored in a retrieval system, or translated into any other language or computer language in whole or in part, in any form or by any means, whether it be electronic, mechanical, magnetic, optical, manual or otherwise, without prior written consent of Objectif Lune Inc.

Objectif Lune Inc. disclaims all warranties as to this software, whether expressed or implied, including without limitation any implied warranties of merchantability, fitness for a particular purpose, functionality, data integrity or protection.

PlanetPress and PrintShop Mail are registered trademarks of Objectif Lune Inc.

PostScript and Acrobat are registered trademarks of Adobe Systems Inc.

Pentium is a registered trademark of Intel Corporation.

Windows is a registered trademark of Microsoft Corporation.

Adobe, Adobe PDF Library, Adobe Acrobat, Adobe Distiller, Adobe Reader, Adobe Illustrator, Adobe Photoshop, Optimized Postscript Stream, the Adobe logo, the Adobe PDF logo are either registered trademarks or trademarks of Adobe Systems Incorporated in the United States and/or other countries.

Trademarks of other companies mentioned in this documentation appear for identification purposes only and are the property of their respective companies.

Title	PrintShop Mail Web - Release Notes
Revision	2010/10/20

<b>1 What's New in PrintShop Mail Web 7.0 .....</b>	<b>1</b>
<b>2 System Requirements .....</b>	<b>3</b>
<b>3 Version notes.....</b>	<b>4</b>
3.1 Resolved issues .....	5
3.2 Known issues.....	7
3.3 Recommendations .....	8



# 1 What's New in PrintShop Mail Web 7.0

## More streamlined Ordering and Order Approval workflow

- **Edit Job Content**  
Visitors can change the contents of PrintShop Mail based jobs in their shopping cart. It lets them change the data entered for User Input fields, change the field mapping of an uploaded database file or replace the database file.
- **View and edit order details in order approval process**  
When approving an order the shopping cart of that order is restored. As the user interface of this process is identical to the standard ordering process it results in a more transparent and intuitive workflow. Besides this new features like the Edit Job Content option are now part of the approval process as well as change/override job quantities and changing the shipping information.
- **Remember jobs**  
Documents created by the visitor stay in the shopping cart even if the visitor leaves the web site. There is no need for the visitor to complete the ordering process. The next time the visitor logs on the shopping cart will list the documents created in a previous session. The contents of the documents can be changed (Edit Job Content), the documents can be removed from the cart and new documents can added.
- **Accept Terms and Conditions**  
The ordering workflow requires the visitor to view and accept the terms and conditions of the print shop. For this the "I Accept Terms and Conditions"-checkbox is added to the ordering workflow. The print shop can change the terms and conditions text and setup up skin specific variants.
- **New File Upload documents templates**  
Typically PrintShop Mail Web is used for repetitive and thus template based jobs. The new File Upload template lets the visitor upload a document from the local hard drive to their shopping cart in ~PrintShop Mail Web. This option replaces the print shop's existing job submission tools (and FTP servers) and channels all incoming orders via PrintShop Mail Web.

## B2C module (option)

- **Public documents**  
Users can create orders containing public documents without having a user account on th system. Once the user is ready to checkout the user will be requested to create an account to be able to complete the checkout.
- **Payment gateways**  
PrintShop Mail Web now supports online payment for orders using PayPal Standard, iDeal, Moneris or Authorize.Net
- **CAPTCHA support**  
Protects the PrintShop Mail Web system against automatic creation of user accounts. When users create their own account they will be asked to enter the text shown in an image.

## Advanced output options

- **Print PrintShop Mail documents to file**  
The operator can now print a PrintShop Mail document to a file on the PrintShop Mail Web server. The operator can download the file via the PSM Web interface and send it to a printer on the local network. This new option simplifies offline hosting at an Internet Service Provider (web hosting farm).
- **Send PrintShop Mail documents to PlanetPress**  
The new Send to PlanetPress Watch (sold separately) option allows the operator to send a PrintShop Mail job to PlanetPress Watch. PlanetPress Watch will have a new helper service that will query the PrintShop Mail Web system to know if there are jobs for it. In the PlanetPress Watch process the job can be send the PrintShop Mail plug-in or to another sub process. The latter can be done based on conditions to spread the load or even concatenate the data file per unique document to later do batch printing at schedule item. To concatenate the data a user can use the XSLT plug-in since the data files are in XML format.
- **Print Static PDF documents**  
Operators can print the high resolution version of a static PDF documents to one of the printers available on the PrintShop Mail Web server.

- **Print 'one-off' PrintShop Mail jobs**

The new Print to PrintShop Mail Web option in PrintShop Mail Designer lets a designer or operator print a 'one-off' job via the PrintShop Mail Web server. The PrintShop Mail Designer application does not require a dongle for this. As the output is generated via the PrintShop Mail Web server it will not show a banner and does not have a record limitation.

- **Send 'File Upload' documents to an Output Folder**

To output of a File Upload document the operator can use the Output Dialog to send the uploaded file to one of the Output Folders. Output Folders are managed in the Settings section and reside on the PrintShop Mail Web server. Scripts and applications, like PlanetPress Watch, can be used to monitor these folders and push the documents into versatile workflows.

- **Print 'File Upload' documents**

In case a visitor uploaded a PDF document using a File Upload template the operator will be able to print the document to a printer. This is similar to the new output option for Static PDF documents.

## **New flexible e-mail templates**

- **Themed e-mail messages**

PrintShop Mail Web sends e-mail notifications and messages when creating a new order, on order status changes and when the visitor requests a new password. The new e-mail templating mechanism allows the system administrator to customize the look-and-feel and contents of these messages and create variants per skin to match the corporate house style of the visitors.

The new mechanism includes options to override the subject, add/remove addressees, create file attachments and to apply formatting using html tags and cascading style sheets (CSS).

## **Improved user experience**

- **Dialogs and interface enhancements**

To let PrintShop Mail Web look and behave like common desktop applications movable dialogs are introduced. Dialogs are special windows to display information and get a response from the user. In PrintShop Mail Web dialogs are used to quickly create new entries for companies, users and publication types. In addition various new interface elements are introduced like collapsible field sets and sliding sheets.

- **Remember Me**

The Remember Me checkbox on the Login page or My Account enables functionality for the familiar "Remember me" option. If selected the visitor will be logged on automatically at the next visit.

- **Lost Password**

This feature allows a visitor to retrieve a new password for their account (based on their e-mail address). An e-mail with the new password is send to the email address of the given user.

## **Integrated license handling**

- **View and Upgrade your license**

In the Settings section information can be found regarding the active license (dongle). This page includes options to invoke the online update request page allowing the administrator to renew the OL Care maintenance agreement and/or acquire additional PrintShop Mail Web modules/plugin-ins.

## **Updated components and new operating system support**

- **New operating system support**

- Windows Vista
- Windows 2008 Server

- **Updated Components**

The core components of the PSM Web system are upgraded to the most recent general available (GA) versions. These components are:

- Apache web server
- MySQL database server
- PHP scripting language
- Zend Framework
- jQuery



## 2 System Requirements

PrintShop Mail Web is a server software and is delivered as an executable installer with predefined configuration settings. We strongly recommend to install the software on a clean installed Windows computer.

### Prerequisites

Please ensure that the following requirements have been met before you run the PrintShop Mail Suite installer:

- Login user must have administrator privileges
- Be sure to have an internet connection during the installation!
- PrintShop Mail Web requires the following system components to be installed on your computer prior to installing the product:
  - Microsoft .Net Framework
    - Version 2.0 SP1 (on Windows 2000, XP and 2003 Server)
    - Version 3.5 SP1 (on Windows Vista and 2008 Server)
  - MSXML 4.0 SP2 Parser and SDK
  - VCRedist (Visual C++ 2008 vanilla)
  - Access Database Engine

The PrintShop Mail Suite setup will automatically check these requirements, missing third party software packages will be downloaded from the internet and installed (but of course, not without your permission). The mentioned components can also be downloaded and installed manually. Installers for these packages can be downloaded from the [Microsoft](#) web site.

The software components are installed in the *Program Files* folder of the system drive. Normally this is drive C.

### Minimum Hardware Requirements

- Pentium 4, 3 GHz 32-bit (x86)
- 2048 MB of system memory
- 80 GB hard drive

### Supported Operating Systems

- Microsoft Windows 2000 (32-bit)
- Microsoft Windows XP Professional (32-bit and 64 bit)
- Microsoft Windows Vista (32-bit and 64 bit)
- Microsoft Windows 2003 Server (32-bit and 64 bit)
- Microsoft Windows 2008 Server (32-bit and 64 bit) (also R2)
- Microsoft Windows 7 (32-bit and 64-bit)

### Suggested requirements

For production servers, it's recommended to invest in specific server hardware, such as large RAID hard disks, UPS (uninterrupted power supply) and enough RAM memory.

- Intel or AMD dual-core processor
- 4096 MB of system memory
- 300 GB hard drive



## **3 Version notes**

The following sections describe the problems resolved in PrintShop Mail Web and PrintShop Mail Server as well as important recommendations.

## 3.1 Resolved issues

The following problems have been fixed in the stated releases:

### Version 7.0.5

- The 7.0.5 release of PSM Suite did not contain fixes for PSM Web.

### Version 7.0.4

- Public users are no longer being removed from a public company when the administrator assigns additional user accounts to or unassigns accounts from that public company.

### Version 7.0.3

- The 7.0.3 release of PSM Suite did not contain fixes for PSM Web.

### Version 7.0.2

- Installation of Apache on non standard port numbers will now work properly
- Printing of PDF files will now work properly in all cases
- The Add Company privilege is now working properly
- Company and Department managers can edit their users
- The openssl program needed to create SSL certificates is now working properly
- Softproofs of completed static PDF jobs are now displayed correctly
- Users can view the details of all the orders they have access to.
- The shipping address on the checkout shipping options page will display the correct department address

### Version 7.0.1

- In the export of completed orders there now is a field with the department code
- The hello command of SMTP e-mail server will now contain the domain that was used to visit the site. Some SMTP servers require the domain name in the helo command to be a valid domain.
- German zip code validation on the shipping options page will now accept all numbers as the first character.
- Several security issues are fixed
- Republishing documents no longer fail when the fonts on the server are in use.
- When republishing a document with different field types (database -> user input) the field types are correctly handled.
- Job names in the print queue will now use the <template-id>-<order-id>.psmd format.
- Thumbnail for PSM documents with text overflow is now correctly displayed.
- Softproof will now use selected job option files
- Special characters in variable field names are handled correctly.
- On the license page the voucher button is now enabled when there is an empty dongle
- The user input form fields will now get validated when the user generates a preview
- License information is more accurate
- For CSV databases the correct field type (numeric, date, text, etc.) is recognized
- User input default department contact will now display the correct name
- E-mail template fallback locations are working properly
- Alternative store fronts can be used with public companies
- Downloading a template zip file on the template properties page will now give a valid zip file in Internet Explorer.
- You can add companies when you do not have the B2C license option
- Republishing a template will not reset the user input field types in PSMW.



- Installing payment modules will work correctly if you have installed PSMW on a different drive than the windows installation drive.
- The company name of a public user will now be used in the checkout and in the order manager.
- Upgrading from PSW 2.x with a custom skin set as default will no longer result in a white screen after first run. Custom skins are copied to PSMW 7 but a warning is shown if the default skin is a custom skin and the default skin is reset to keep the site working.

### **Version 7.0**

- Various skin caching issues are resolved
- 'Drag and drop' was not working in Internet Explorer 8, this issue is resolved
- Various collection related issues are resolved

### **Version 2.2.1**

- Rounding issues in price calculations are resolved
- A number of security issues discovered in PSW 2.2 are resolved
- Skin improvements, added support for: FireFox 3 and Safari for Mac and Windows
- Several Rich Text Editor related issues are resolved (e.g. alignment not working properly).

### **Version 2.2**

- A number of security issues discovered in PSW 2.1 and 2.0.1 are resolved
- Significant speed improvement of the Users and Companies overviews with large number of user accounts, companies and departments
- Softproofs with print restrictions didn't show in older versions of Acrobat Reader

### **Version 2.1**

- Several COUNTER() related issues that resulted in wrong previews and output have been resolved.
- Date format wasn't applied correctly on all web pages.
- The calendar wasn't properly working in all skins.
- Significant speed improvement of the Completed orders overview in the Order Manager section.
- Updated German language strings
- Some strings in the e-mail notifications were hard coded in English

### **Version 2.0.1**

- Fixed Email Notification issues:
  - When placing an order, messages are send to all users of that company that have the "Release" privilege (across all departments)
  - Deleted and inactive user accounts received email notifications
- In specific scenarios the print output differed from the softproof
- When updating from version 1.0 to 2.0, the following occurred:
  - The publication type properties pages showed department name instead of company name
  - The last user that was assigned to a department encountered an Unauthorized Access warning when creating a new job
- Export from Completed Orders overview did not contain details of the template, pub type and ordered by person
- User input field that have 'linked' default values (f.e. company name) did show special characters properly.

## 3.2 Known issues

The following are known issues:

- Publishing a PSM document over an existing PSM document sometimes fails. This is caused by the fact that PrintShop Mail Server Service keeps the template in memory for approx 180 secs. You can either wait or restart the PrintShop Mail Server Service.
- After creating a new printer on the PSM Web server this printer is not available for use in the Web interface until the PrintShop Mail Server Service is restart or the PrintShop Mail Web server is rebooted.
- The proceed button of the Moneris payment module is sometimes in FireFox unclickable with the mouse; as a workaround the user can press the Enter key or resize the browser window.
- The Pending Payment status is not reported to MIS modules.
- Advanced printer settings (like custom page sizes) will be lost when publishing documents to a PSM Web server running on Windows 2003 Server from a PSM client running on one of the following operating systems: Windows 2008 Server, Windows XP SP3, Windows Vista or Windows 7.

### 3.3 Recommendations

- Adobe PDF printer is not supported as printer for PrintShop Mail Web (Server).
- It is not supported to use the same filenames for different image-files in PrintShop Mail documents (images residing in different (sub)folders).
- E-mail Notification; whilst SMTP authentication offers extra security, it may also slow down the e-mail notification process.
- It is required to have customers (clients) upload MS Excel databases for templates. Other database formats than MS Excel may render unexpected results.
- Currently supported web browsers: MS Internet Explorer and Mozilla FireFox; other browsers may work just fine, but have not been tested.
- To view PDF Softproof (client) it is required to use Acrobat Reader 6.01 or higher.
- Multiple browser sessions using MS Internet Explorer; in some cases users might want to open multiple sessions (multiple logon-instances) of PrintShop Web pages: in such case it is required to start a new instance of IE via the Windows Start menu. Opening a new window from within a running IE-instance will only duplicate the current PrintShop Web page and will not open the login-page.
- Do not use the ampersand character and/or double, single quotes in ISO codes of currencies (Settings section).
- Upgrading to PSM Web 7 cannot be undone, the PSM Web 7 database is not backwards compatible with PSW 2.x.